



## 2011 Venue | Driving | Access | Maps

### Colorado River – Coyote River Ranch

#### Controllers/Spectators/Press

Take I-70 to Exit 133, Dotsero. Take US 6, 1<sup>st</sup> Right on Cotton Lane, Right into Coyote River Ranch, keep right inside ranch and pass metal barn, continue down road to parking area. Signs are posted for parking.

**Access Is Open** - The venue is open to walk in on and watch the action. Enjoy the ranch.

#### Competitor Bus/Van

Continue past parking signs. Stay on road that runs along train tracks; do not bear left onto fields or drainage ditches. Markers are set along road to show where beat number walk-ins are. Turn around area has a posted sign and return along same road. Horses are not in fields, so gates stay open. Road in field is grass covered, go slowly.

Sector Judge will meet you there and provide directions for angler drop off and vehicle turn around.

Ranch owner is Karl Berger. The Sector Judge is Adam Papuga.



Colorado River Venue – The Coyote Ranch



## The Blue River – Upper and Lower Venues

### Controllers/Spectators/Press

From Silverthorne take Hwy 9 north and go past Green Mountain Reservoir to Spring Creek Road.

From I-70 Wolcott exit 157, then CO 131 N for 13.5 miles to State Bridge turn right then N on County road 1/Trough Rd 13 miles to Hwy 9 S and turn right, go 8 miles to right turn onto Spring Creek Road. Take road down to river and cross bridge, parking lot immediately to your left. **Controllers** will meet at parking area and get brought in by Ranch vehicles.

**Access Is Limited** – All controllers, spectators, press must take shuttles into ranch and be dropped off for session and ride back to parking at end of session. You may walk from beat to beat during the session. No public vehicles allowed.

### Competitor Bus/Van

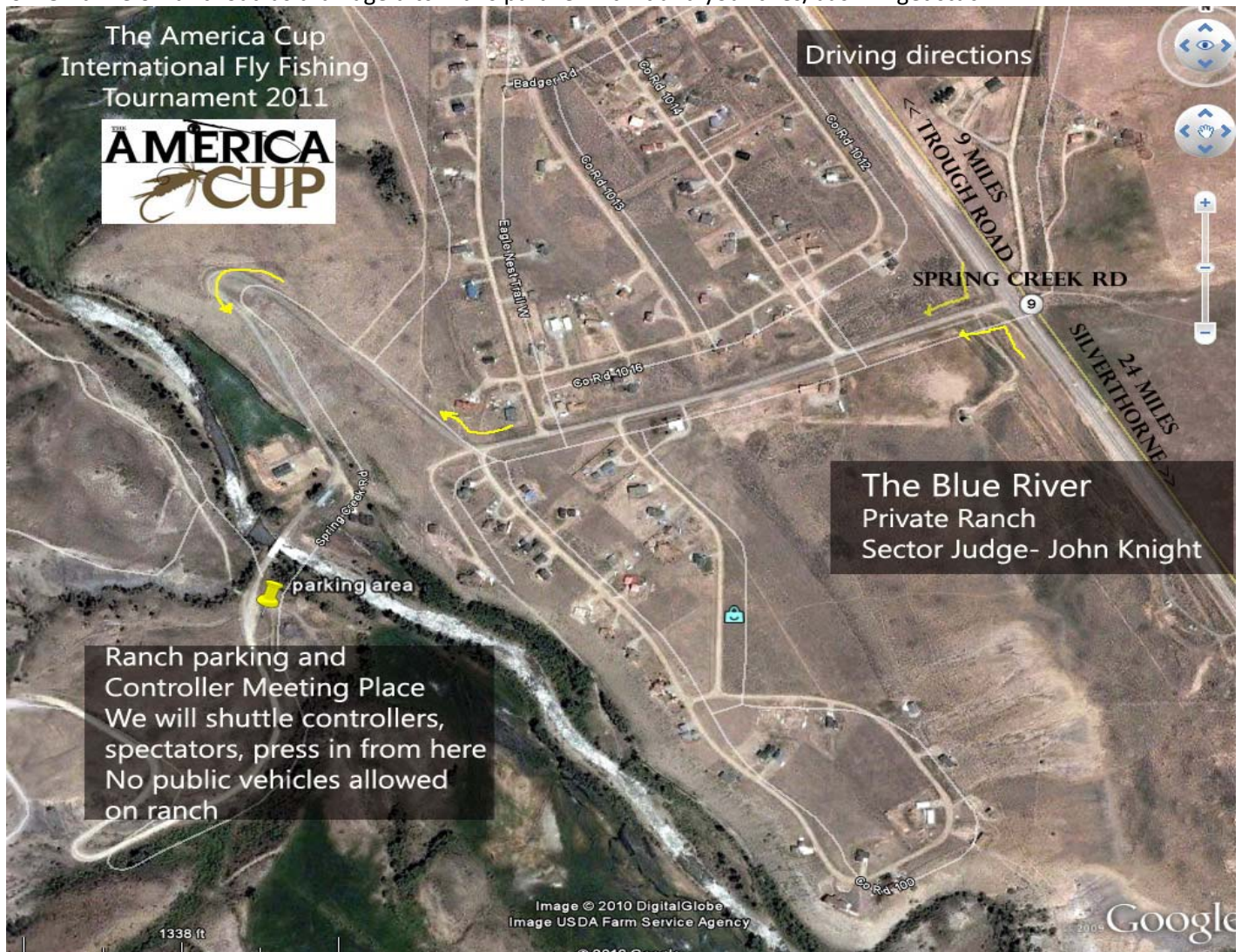
Shuttle Bus with Lower group must lead Upper group bus down road for proper drop off timing. *This is important!*

No passing on ranch road (one lane), drive slowly on ranch property.

Shuttle will be met by 2 sector judges and they will direct you thru the ranch access fence and ranch road.

Driver will drop off anglers as you travel down ranch dirt road at road markers. Turn around area at Out Cabin.

Do NOT drive off dirt road as drainage ditch runs parallel with it and your tires/bus will get stuck.



The Blue River upper and lower Venues – Private Ranch

The America Cup International Fly Fishing Tournament

[www.theamericacup.com](http://www.theamericacup.com)



## Lake Nottingham

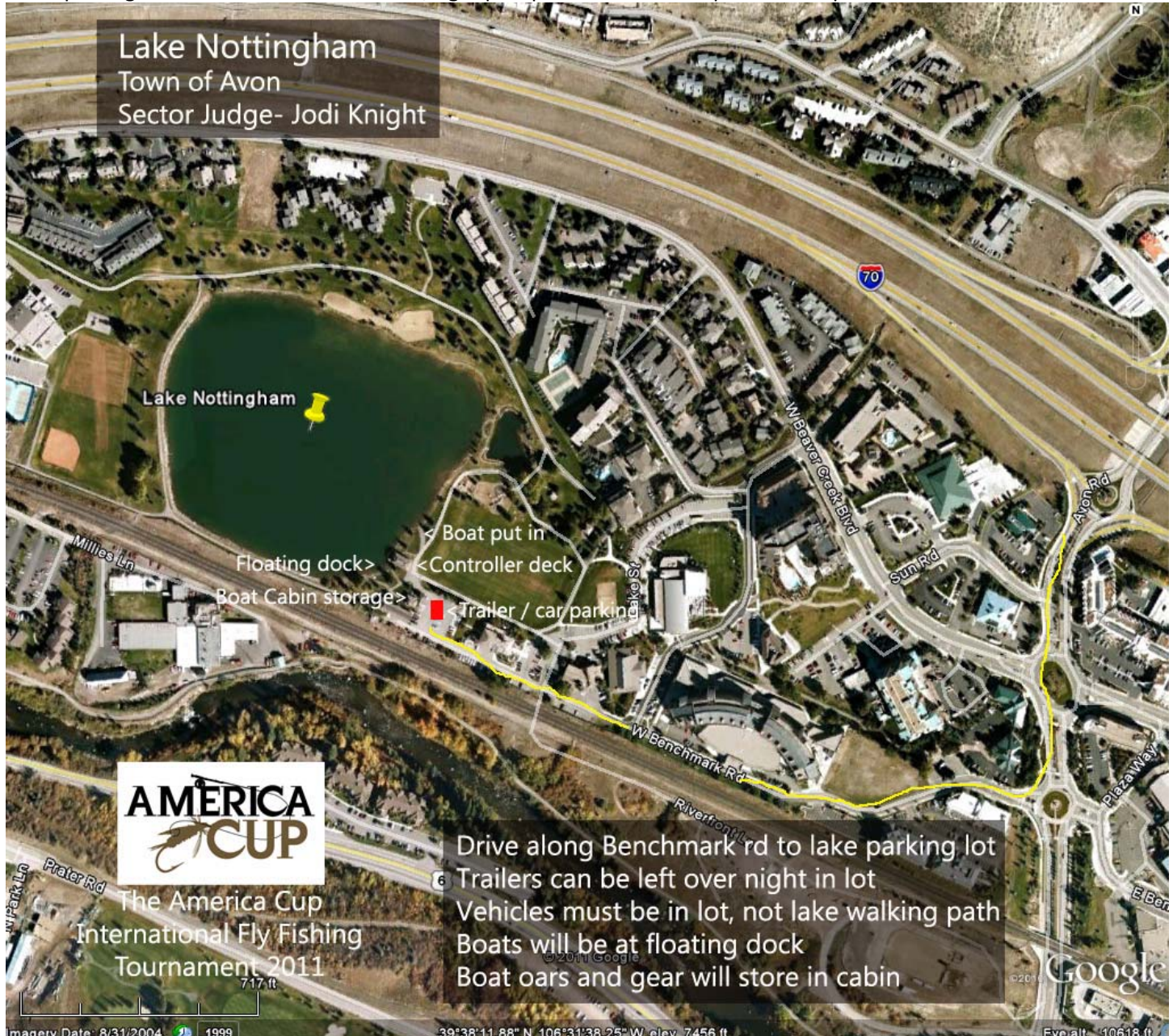
### Controllers/Spectators/Press

Take I-70 to Avon, CO. Go south on Avon road to 3<sup>rd</sup> roundabout (go 1st right) and take Benchmark road to dead end, past police station. Parking for event is by the lake cabin. Some spaces are reserved for boat trailers. Parking is free.

**Access Is Open** - The venue is open to all. We have rented the covered deck, so please stop by. Enjoy the park.

### Competitor Bus/Van

Go to parking lot at end of Benchmark road, right past police station. Drop off all and park in lot.



Lake Nottingham venue – Town of Avon

The America Cup International Fly Fishing Tournament

[www.theamericacup.com](http://www.theamericacup.com)



## Sylvan Lake

### Controllers/Spectators/Press

Take I-70 to Eagle, CO. Off exit go left to roundabout and then go right (look for sign directing you to Sylvan Lake State Park), take next left on Capital Ave, which turns into Brush Creek Road, bear left at stop sign (follow park signs) to old Brush Creek Road and go 14 miles to State Park, past the park visitor center, bear right to short drive to lake.

Controllers - The Sector Judge has a daily parking pass (pre-purchased) for all controller vehicles. Sector Judge will show you where to store trailers. We have rented a cabin for the controllers.

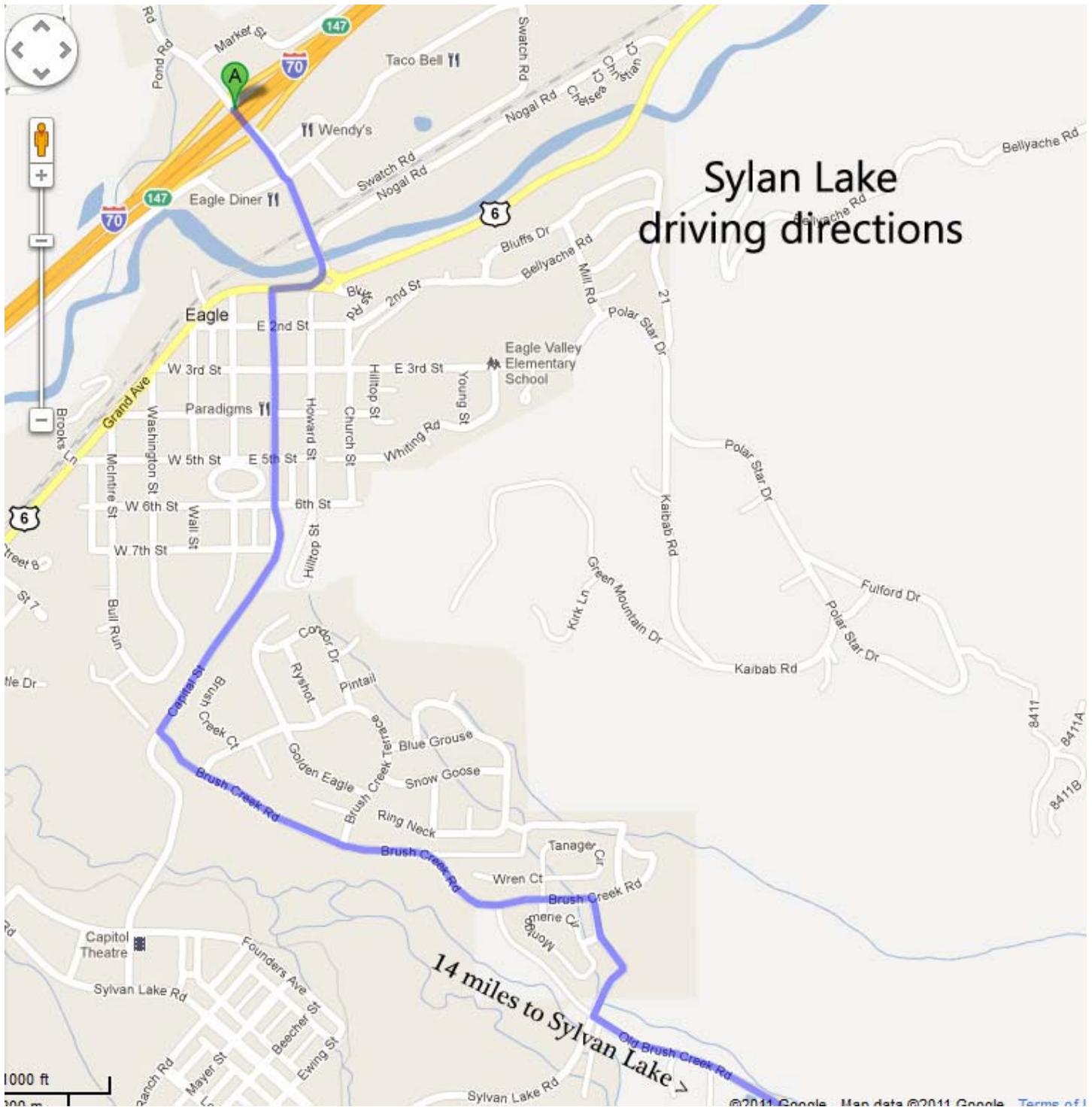
**Access Is Open** - The venue is open to all. The park vehicle access fee is \$7 per day.

### Competitor Bus/Van

The Sector Judge has the bus/van parking passes (pre-purchased). Drive down and to left, turn right at restrooms and drop anglers off near boat put in. Drive back to parking area above put in next to restrooms.



Sylvan Lake venue – Sylvan Lake State Park / CDOW



**Sylvan Lake venue – Zoom of path through the Town of Eagle**

*Thank you and contact Jodi with any questions 970-390-7425.*